

## Notification to Fishermen

### Nord Stream 2 Project

01.05.2019

#### 1. Purpose of this notification

Nord Stream 2 AG hereby submits a notification for the activities to be performed for the Nord Stream 2 Project in May 2019.

During this period, pipelay will continue in the Swedish EEZ with one lay barge, *Pioneering Spirit*, which will pass into the Finnish waters in the second half of the month. *Solitaire* will operate in the territorial sea of the Russian Federation throughout May.

Nord Stream 2 AG reminds that the construction vessels have limited manoeuvrability while performing their work and that safety exclusion zones are therefore established around the vessels carrying out the Nord Stream 2 activities.

#### 2. Planned Vessels

##### Pipelay in Sweden and Finland

*Pioneering Spirit* – Call sign: 9HA4112



**Pioneering Spirit Survey support**

*Fortitude* – Call sign: 9HA4717



**Other supporting vessels to Pioneering Spirit**

Pipe Carriers and Support Vessels:

*Symphony Provider*, PCVX

*Normand Naley*, LCOS

*Sea Supra*, LAEW8

*Standard Supplier*, MBF16

*Havila Aurora*, C6XU4

*Symphony Performer*, PBRD

*Sayan Princess*, 9HA3059

*Solvik Supplier*, C6ZW5

*PSV Felicity*, LNMG3

**Rock placement in Finland:**

*Seahorse* – Call sign: PCAP



### 3. Duration and locations of activities

In May, **rock placement** activities of short duration will be carried out with *Seahorse* in the Finnish EEZ, close to the Russian border.

*Pioneering Spirit* will perform the **pipelay** in the Swedish jurisdiction, from south to north. The pipe supply vessels will shuttle from the pipe logistics base in Koverhar to the pipelay vessel. In the second half of the month, the vessel will cross the maritime border between Finland and Sweden to continue the lay in the Finnish waters.

*Solitaire* laid the remaining section of the Nord Stream 2 Line A in Finland, close to the Finnish-Russian border, in the end of April. She will continue the pipelay in the Russian jurisdiction throughout May. Pipe transport to *Solitaire* will be carried out from Kotka, Finland.

The maps below illustrate the May activities. Please note that these details are subject to change for operational reasons.

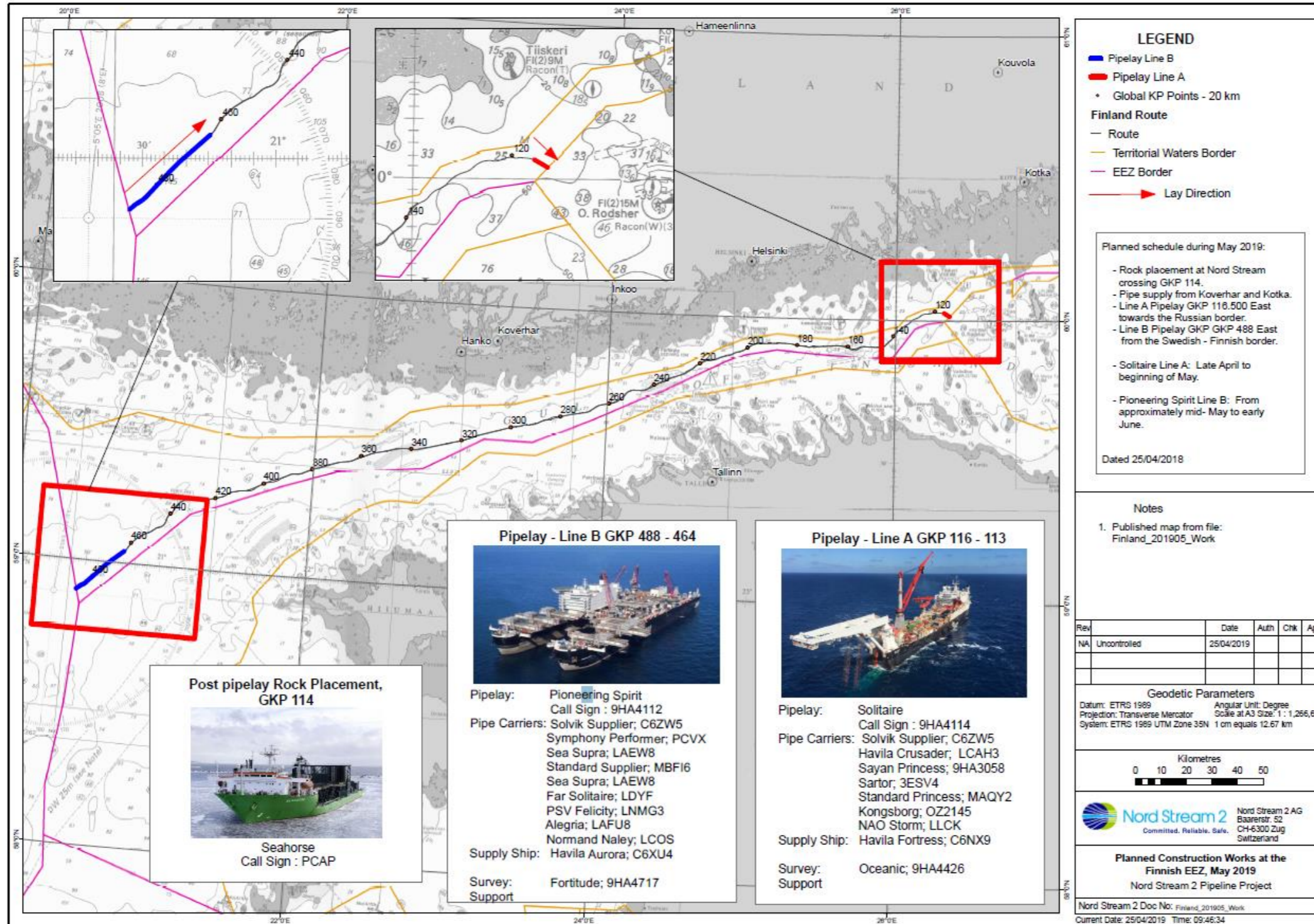


Figure 1: Nord Stream 2 construction activities in end April and May in the Finnish EEZ

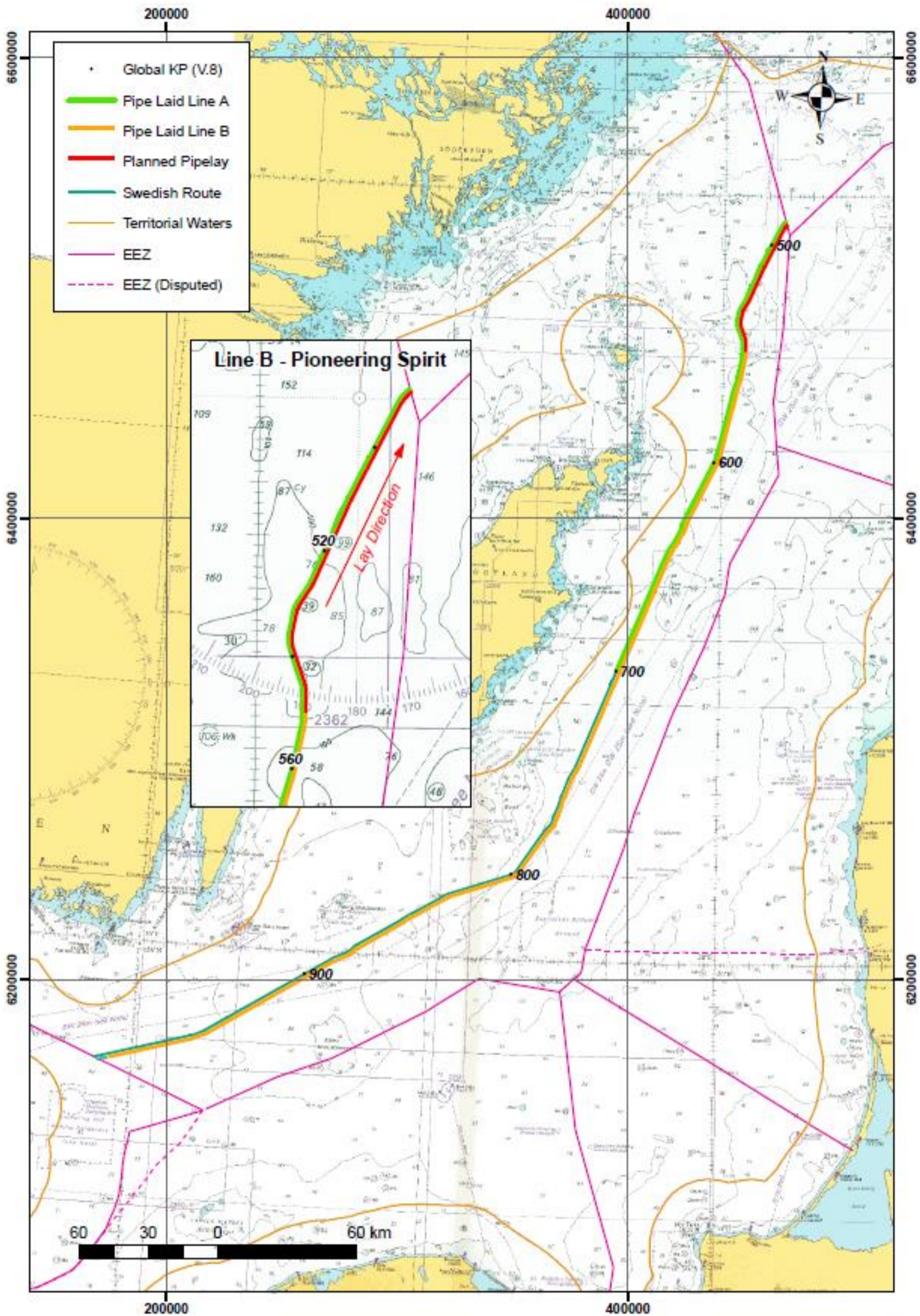
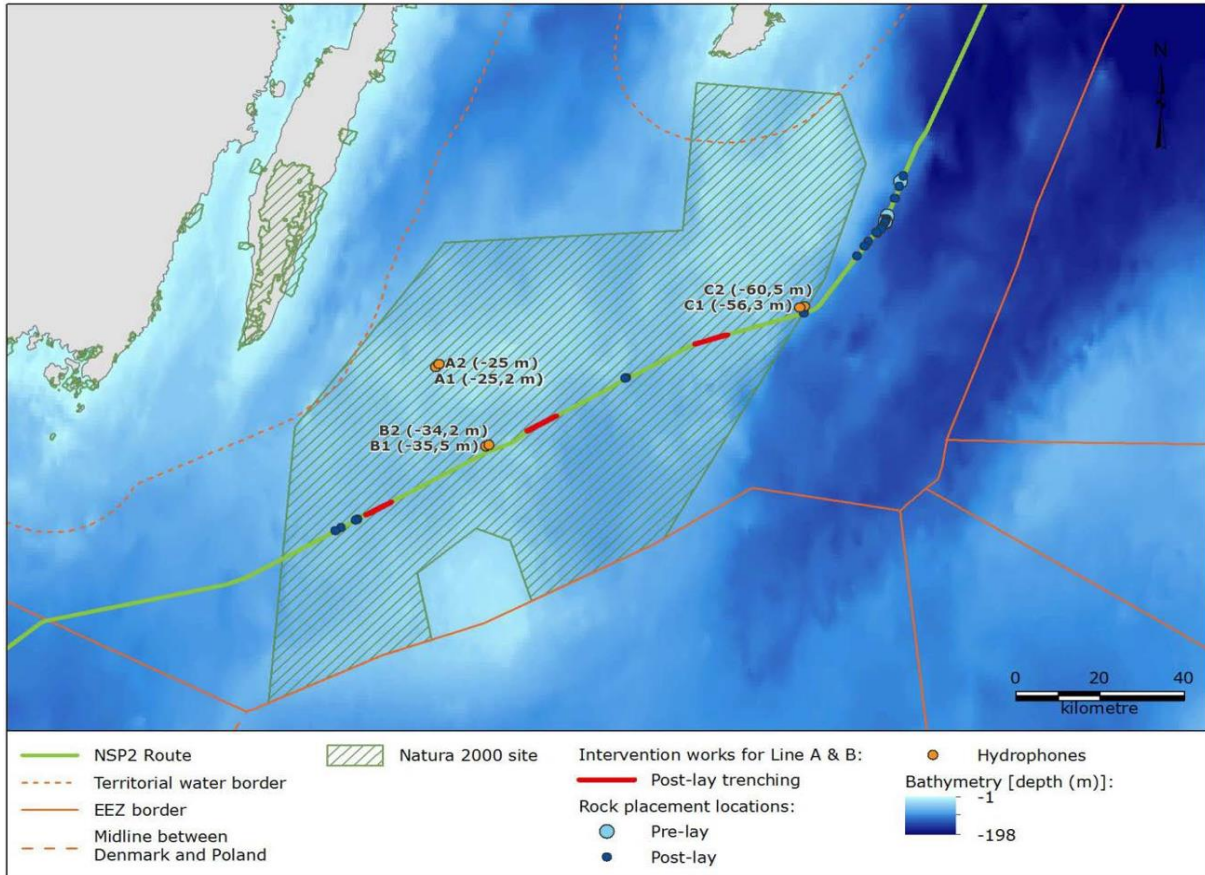


Figure 2: Nord Stream 2 construction activities in May in the Swedish EEZ

#### 4. Monitoring activities in Swedish waters

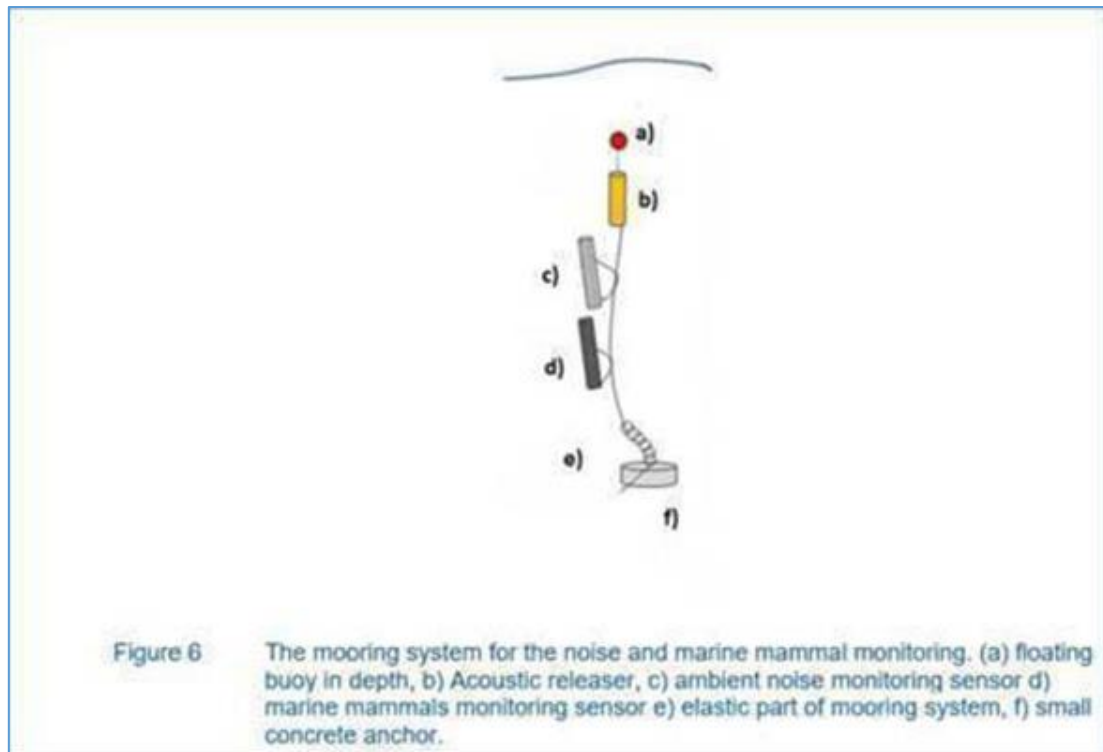
Stationary hydrophones to measure underwater noise have been placed on the seabed at a few locations within the Natura 2000 area *Hoburgs bank och Midsjöbankarna* in Swedish waters (see orange circles in the below map).



#### Positions of the installed rigs:

Rig ID	Latitude	Longitude
A1	56,1659	17,1364
A2	56,1722	17,1497
A3	56,15979	17,14779
B1	55.9785	17.3412
B2	55.9836	17.3559
B3	55.9919	17.3530
C1	56,32895	18,53138
C2	56,32634	18,51723
C3	56,33748	18,52928

The underwater noise measurements are done due to a direct request from the Swedish authorities as part of Nord Stream 2's obligatory environmental monitoring program. The hydrophone rigs are up to 3 m in height above the seabed and are expected to be in location until mid-May 2019. In order to safeguard the rigs and to avoid the risk of damage to nets and other fishery equipment, fishermen are advised to avoid near-bottom trawling at the below mentioned locations. The image below illustrates how a rig looks like:



## 5. Exclusion Zones

Nord Stream 2 AG would like to highlight that a safety zone of 1 nautical mile is established around the pipelaying vessels *Solitaire* and *Pioneering Spirit*, and 500 meters around the other vessels performing activities for Nord Stream 2 Project.

Information about the works to be performed in the upcoming weeks, can also be found on the Notices to Mariners web-page, available at:

<https://vayla.fi/ammattimerenkulku/merikartat/merikarttojen-paivityspalvelu#.XMhhBGyP7Nw><sup>1</sup>

and

<http://www.sjofartsverket.se/sv/Sjofart/Sjokort/Ufs---Underrattelser-for-sjofarande-/Sok-i-databasen11/>

In addition to this information regarding May activities, further notification(s) will follow in due course with regards to Nord Stream 2 construction activities in the coming months.

---

<sup>1</sup> If you have issues with accessing this link, please copy and paste it into browser.